

**SIEMENS**

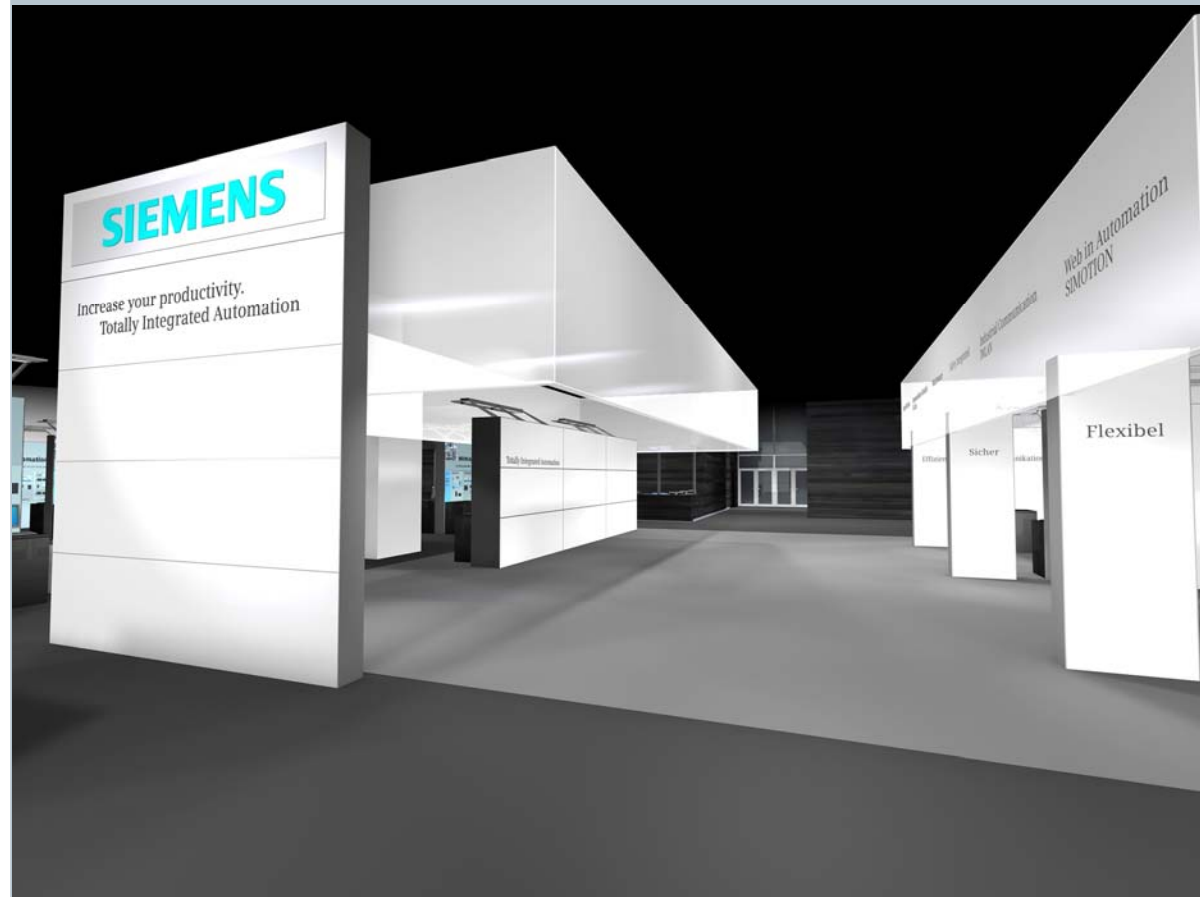
# SPS/IPC/DRIVES 2008

## SIMATIC Exposition @news

Preview release 2008-10-02

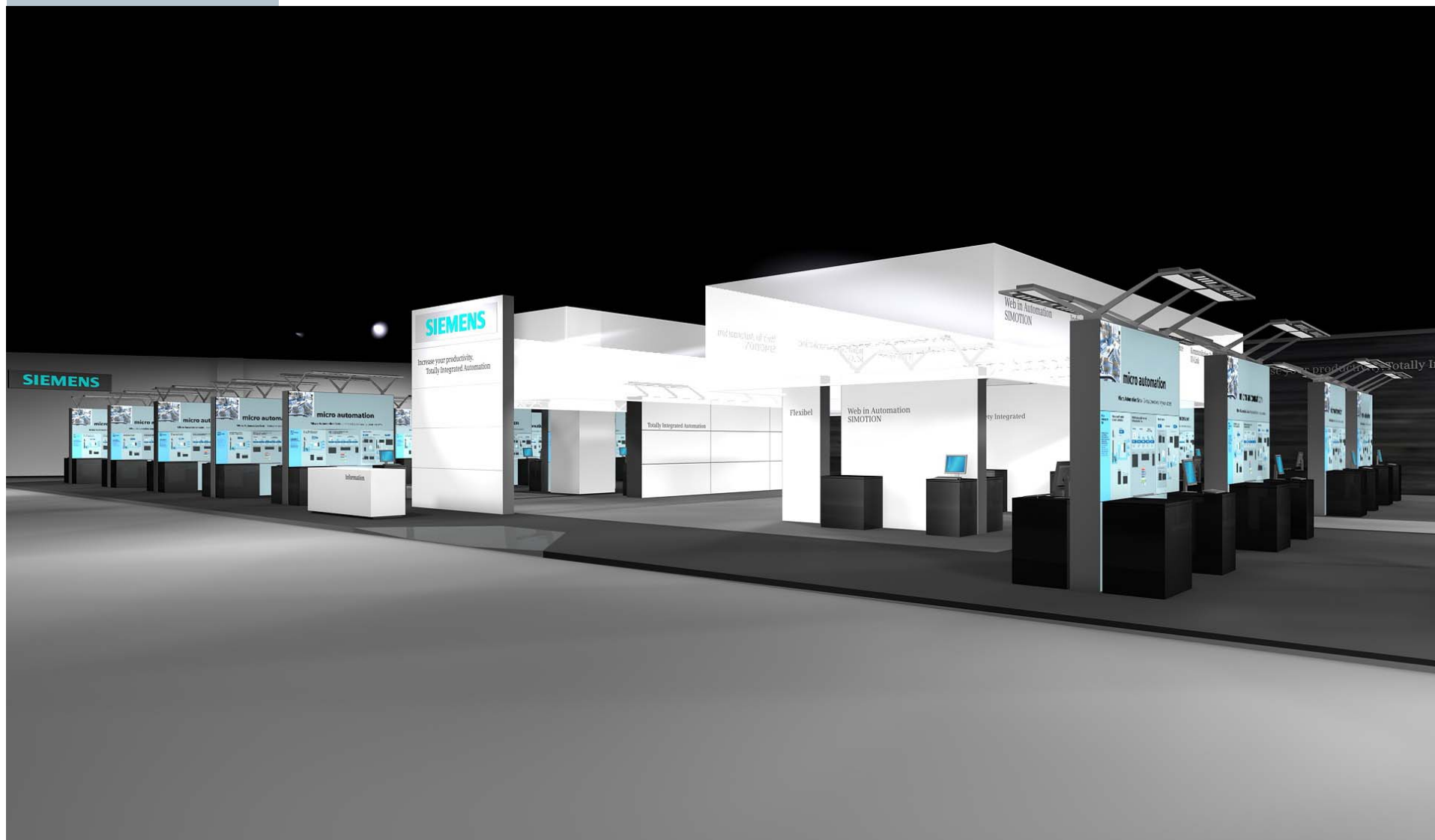
Siemens Industry Sector

IA AS



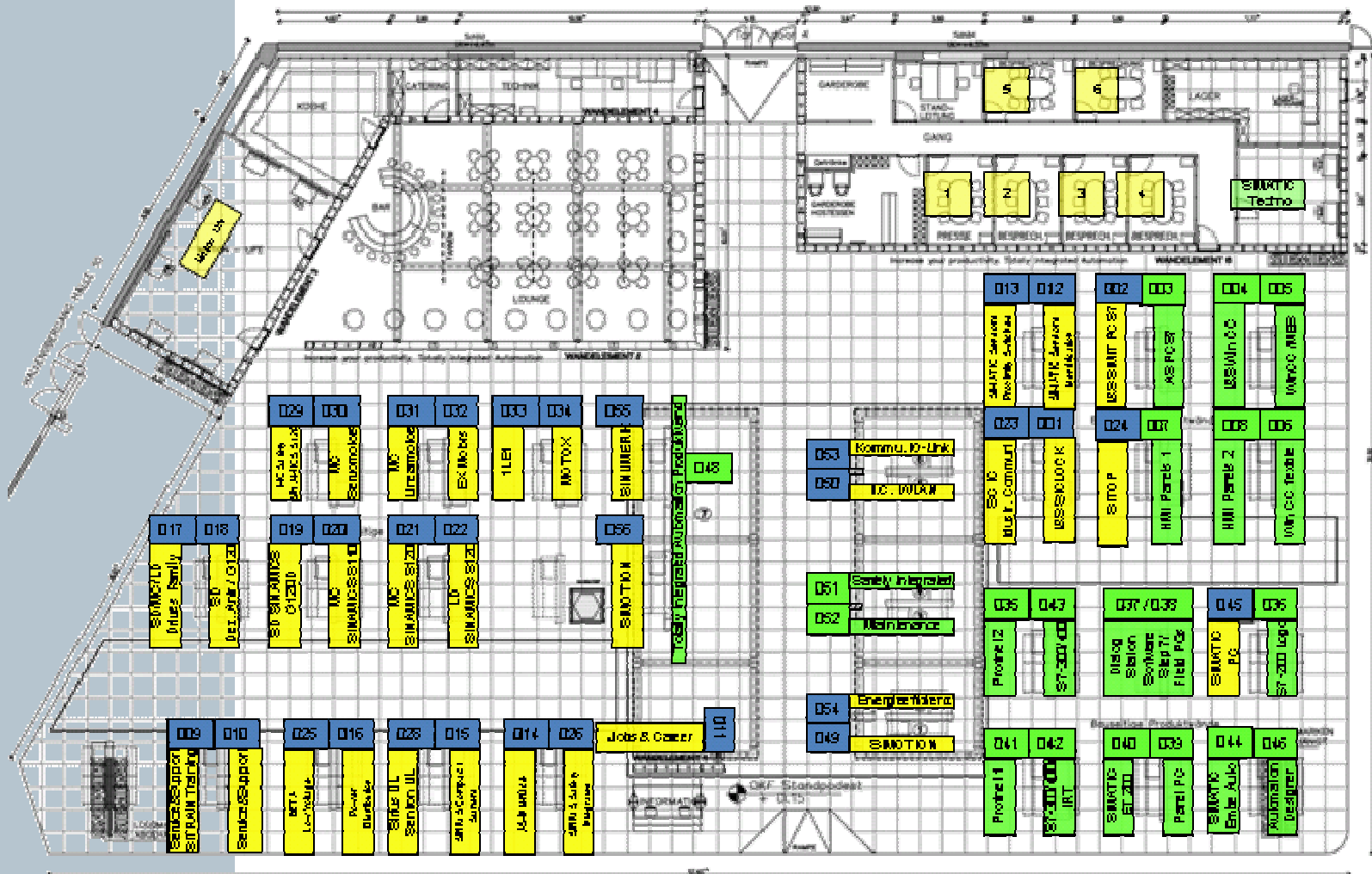
**SPS/IPC/Drives 2008**  
Siemens booth in Hall 9

Tuesday,	2008-11-25	9:00 a.m. - 06:00 p.m.
Wednesday,	2008-11-26	9:00 a.m. - 07:00 p.m. <b>new!</b>
Thursday,	2008-11-27	9:00 a.m. - 05:00 p.m.



# SPS/IPC/Drives 2008

## SIMATIC on the Siemens booth



AS panels and partitions

# SPS/IPC/Drives 2008 exposition highlights

## SIMATIC

### Overview

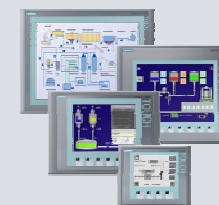
SIMATIC  
HMI

SIMATIC  
DP

SIMATIC  
controllers

### SIMATIC human-machine interfaces

- SIMATIC HMI basic panels 10", 15"
- SIMATIC HMI widescreen panel 4"
- SIMATIC HMI IP65 devices (fully enclosed panels)



### SIMATIC distributed I/Os

- SIMATIC ET200eco block I/O on PROFINET
- SIMATIC ET200S fail-safe CPU with PROFINET



### SIMATIC controllers

- LOGO! with new 0BA6 series
- SIMATIC mEC – embedded controller with PROFINET
- SIMATIC WinAC RTX 2008 – with PROFINET
- SIMATIC S7 with new PROFINET functions



## SPS/IPC/Drives 2008 exposition highlights

### SIMATIC human machine interfaces

Overview

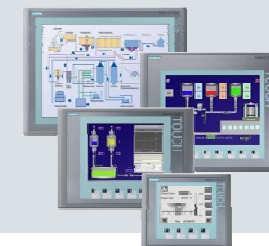
**SIMATIC  
HMI**

SIMATIC  
DP

SIMATIC  
controllers

#### Low-cost specialists for simple HMI tasks

- **SIMATIC HMI basic panels** 15", 10" (6", 4" available soon)
- Color or monochrome
- Touch display and function keys
- Ethernet or PROFIBUS / MPI



#### Small panel with cinema format

- **SIMATIC TP 177 4" widescreen**
- Color TFT display 480x272 pixels
- Touch display with direct keys and dimming function
- Ethernet or PROFIBUS / MPI



#### Fully enclosed HMI panels

- **Flat panel, thin client or multi panel** 15" with IP65 protection
- Mounting on supporting bracket or stand (VESA)
- Service-friendly mounting of rear panel
- Low weight of less than 10kg



## SPS/IPC/Drives 2008 exposition highlights

### SIMATIC distributed I/Os

Overview

SIMATIC  
HMI

**SIMATIC  
DP**

SIMATIC  
controllers

#### Rugged, space-saving block I/O with IP67 protection

- **SIMATIC ET 200eco PN**
- PROFINET in line or star topology
- Fully encapsulated die-cast zinc housing
- 2 housing forms (4xM12; 8xM12) for designs without control cabinets



#### Distributed, fail-safe SIMATIC CPU in ET200S design

- **Fail-safe PROFINET IO-Controller** with 196KB RAM
- Certified up to SIL 3 in accordance with IEC 61508
- 3 PROFINET ports for line topology and PG connection
- Expansion possible using PROFIBUS DP master module



# SPS/IPC/Drives 2008 exposition highlights

## SIMATIC controllers

Overview

SIMATIC  
HMI

SIMATIC  
DP

**SIMATIC  
controllers**

### LOGO! – the logic module for industrial and building automation

- Extremely simple configuration without additional software
- Remote text display possible
- Integral analog inputs and fast counters
- Teleservice capability



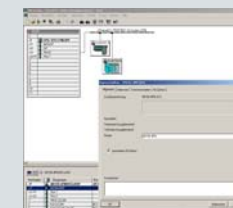
### Modular embedded controller ready for switching on

- **SIMATIC mEC** with 1GB RAM in S7-300 design
- PROFINET integrated, expansion possible by standard PC interfaces and PCI-104 cards
- WinAC RTX 2008 as PLC and WinCC flexible Runtime as visualization



### SIMATIC S7 with new PROFINET functions

- Fast startup for rapid replacement of tools
- Replacement of a device (IO device) without PG or interchangeable medium thanks to topology information
- Definition of setpoint topology simplifies commissioning



**SIEMENS**

# SPS/IPC/DRIVES 2008

Thank you for  
your visit

Siemens Industry Sector

I IA AS

