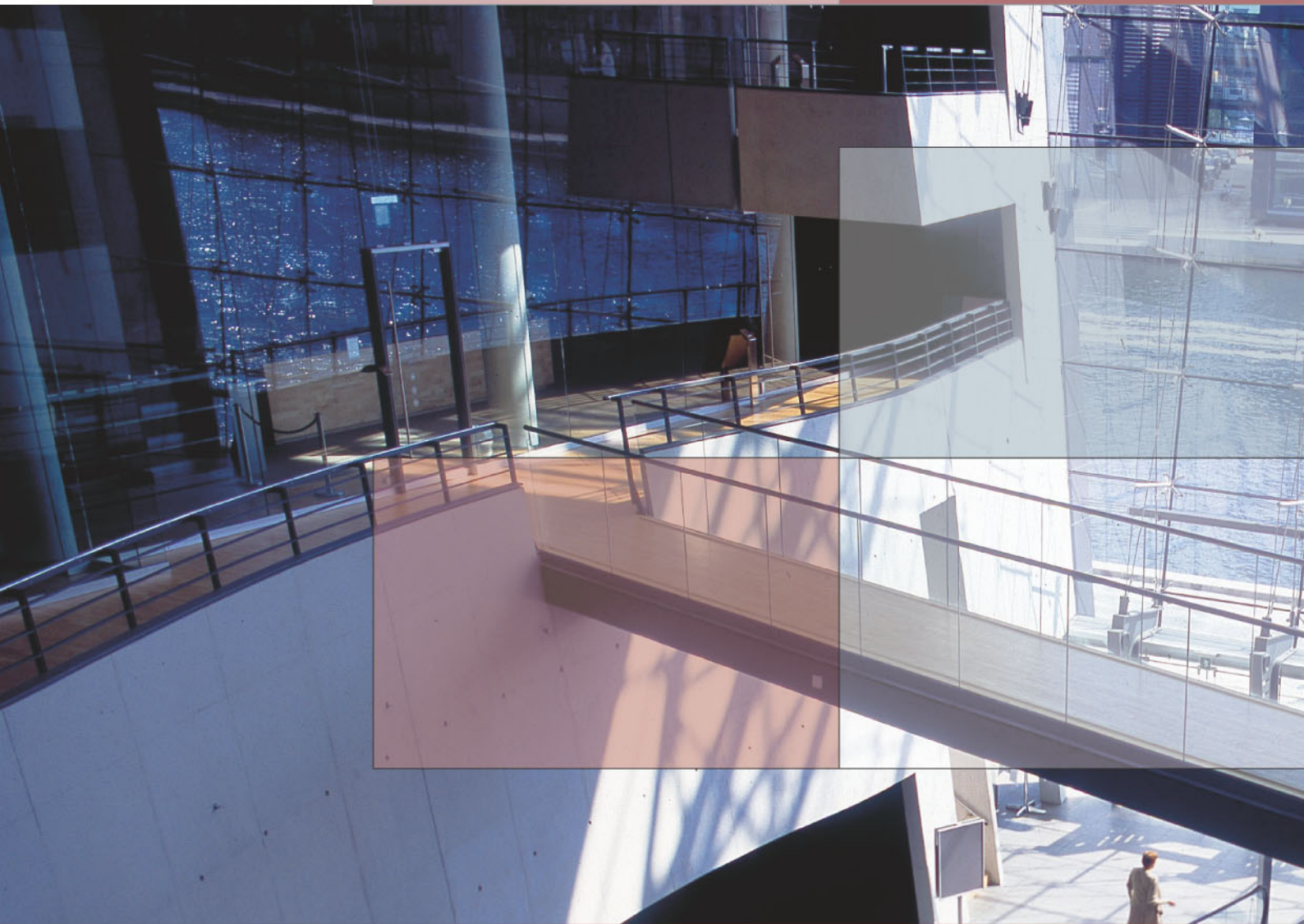


灵巧的规划是成功的一半 With clever **planning** your work is half done

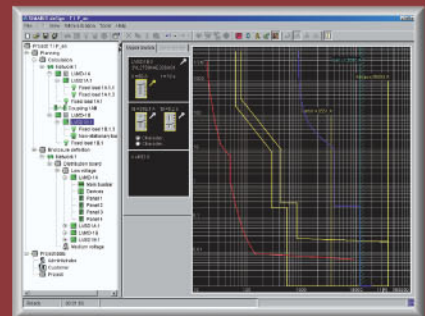
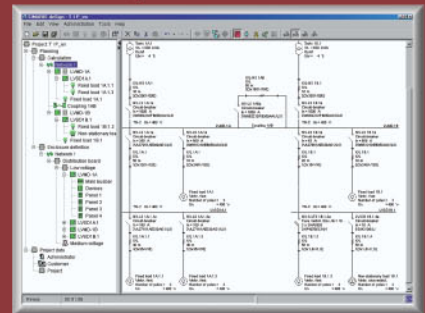


为商用和工业建筑进行配电规划从来不是件容易的事，但也从未比今天更复杂。易于使用的 SIMARIS® 系列规划软件将会推进费时的常规工作，从而降低成本，为您在草图阶段甚至就可提供项目执行的概况，让您以最低的费用应对变化。此外，SIMARIS 设计可以进行最佳开关设备定制：自动选择最经济的解决方案，只需按下按钮，即可转换为您的规范文本。这样不仅能保证您规划的高度安全和质量，而且确保满足尺寸、安装标准和规章制度的每个相关规定。即使考虑到时间电流特性，仍

可满足有关人身和设备安全的所有要求。通过它，您可以对未来变化做好充分准备：例如一个规划为办公楼的建筑可能后来需要变成购物中心。通过全集成配电，您可灵活应对建筑用途变更，实现高效规划，而您可以集中精力考虑真正重要的问题。



SIMARIS design



用 SIMARIS 设计规划工具可以进行特别快速、高效的配电系统规划和定制。可以在最短的时间内实现每个步骤：从单线图到所需配电元件的选择。

The SIMARIS design planning tool enables particularly fast and efficient planning and dimensioning for power distribution systems. It completes every step in a minimum of time: from the single-line diagram to the selection of the required power distribution components.

It has never been easy to plan power distribution systems for commercial and industrial buildings. But it has never been more complex than today. User-friendly planning software from the SIMARIS® range will cut costs by facilitating time-consuming routine tasks, providing you with an overview of the project implementation even as early as in the draft stage and allowing you to respond to changes with a minimum of expense. Moreover, SIMARIS design enables opti-

mal switchgear dimensioning: the most economical solutions are automatically selected and can be transferred to your specification texts at the touch of a button. This not only guarantees a high degree of safety and quality in your planning, but also gives you the certainty that every relevant stipulation in terms of dimensioning and installation standards and regulations is met. All requirements regarding the safety of personnel and machinery are complied with, with time-

current characteristics being taken into account. In this way you are well-prepared: a building that was planned as an office block might be needed as a shopping center at a later date after all. Efficient planning with maximum flexibility in the face of changes in use that might arise – this is feasible with Totally Integrated Power, allowing you, the electrical consultant, to focus on what's really important.