

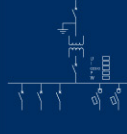
集成配电系统解决方案

Integrated **solutions** for power distribution

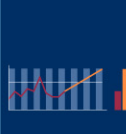
通讯
Communication

过程 / 制造自动化
Process / Manufacturing
Automation

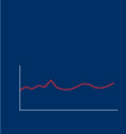
操作与监控
Operation &
Monitoring



负荷管理
Load
Management



负荷曲线
Load Curves



预测
Prognoses



维护
Maintenance

- Substation
- Power Distribution
- Maintenance task

Hall 1 Air conditioning system check-up
Distribution 3 Replacing circuit breaker contacts
Infeed B Replacing meters

通知与故障管理
Notification
and Fault
Management



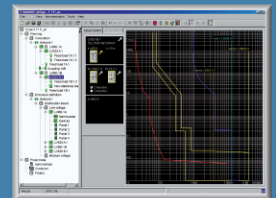
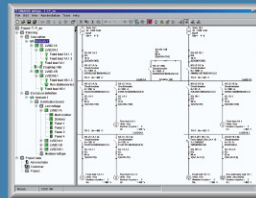
产品与系统
Products and Systems



≤ 52 kV



规划与系统配置
Planning and
System Configuration



TOTALLY INTEGRATED



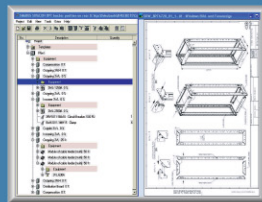
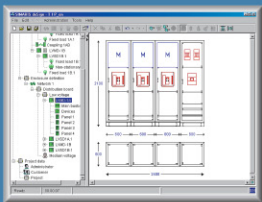
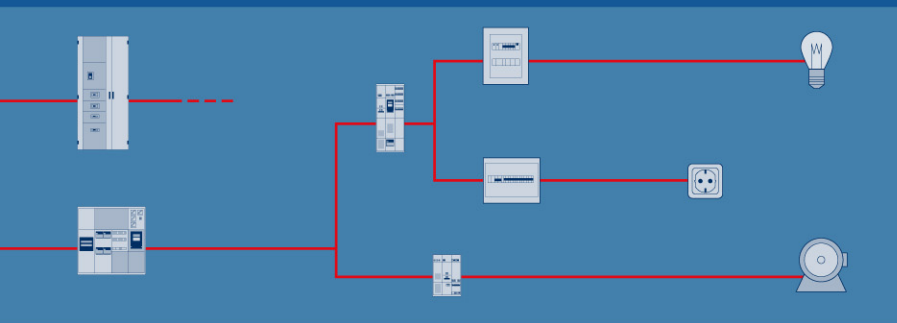
选择性保护
Selective Protection

报表
Reports

电力质量
Power Quality

成本分配
Cost Allocation

楼宇自动化
Building Automation



TOTALLY INTEGRATED POWER

通过全集成配电 (TIP)，西门子为商用和工业建筑的配电提供了全面的解决方案——从中压设备到墙壁插座。全集成配电，基于集成规划和配置以及完全协同的产品和系统、连接工业自动化和楼宇自动化配电系统的通讯和软件模块，并以此提供独特的节约潜力。

With Totally Integrated Power™ Siemens offers integrated solutions for electrical power distribution in commercial and industrial buildings – from medium voltage down to wall outlets. Totally Integrated Power™ is based on the integration of planning and configuration, well-matched products and systems, as well as communication and software modules for interfacing the power distribution systems for industrial automation and building automation, and thus offers distinct savings potentials.