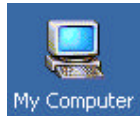


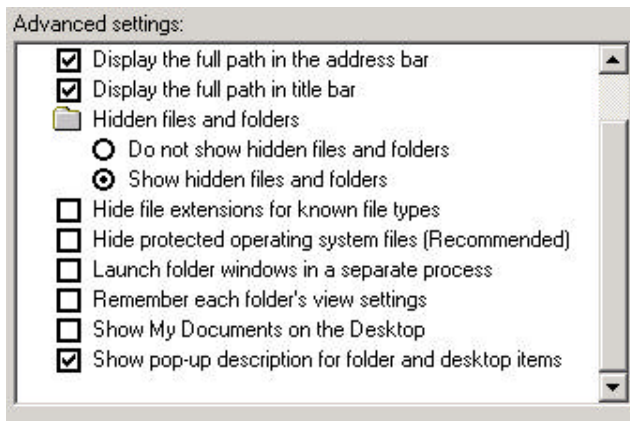
## 1.1 Installation of a Workstation for PCS7

The following method has proved effective for Windows 2000 installation in conjunction with PCS7:

1. Partition and format the hard disk.  
It is recommended to create a separate partition to hold disk images.  
Programs: e.g. Powerquest Volume Manager
2. Start Windows 2000 Setup by booting from the Windows 2000 CD.  
Follow the instructions given by the Setup program.  
Enter the relevant information as and when requested, specific to customer.
3. As to specifying whether the computer is in a network, initially choose the default setting. This will make setting up the network subsequently in the Windows 2000 environment much easier.
4. Following successful installation the device drivers must be installed. They are located on the CD shipped with the PC.
5. Set up the network: Assign an IP address, include it in a workgroup or domain.
6. Install Internet Explorer 6.0 SP1.
7. Install Service Pack 4 for Windows 2000.
8. Install Microsoft Hotfix Q828748, it is located in **CD4\Microsoft\MS\_Hotfix\_Q828748\English**





9. Choose  → Tools → Folder Options → View tab and make the following settings:



10. **Uninstall games** and **the index service** and **install the Message Queuing services**.

Procedure:

- Choose  → Search → "By file and folder" to search for the **sysoc.inf** file
- Remove all "hide" entries from it (but do not remove the commas)
- Save the file
- Choose  → Settings → Control Panel → Add/Remove Programs → Add/Remove Windows Components to make the desired settings

11. Create a disk image (e.g. using Powerquest Deploy Center, or ghost)

12. install the SQL server 2000

13. install PCS7 V6.0