

SIMIT SCE

The virtual plant for training in automation

Your Success is Our Goal

SIEMENS

Industrial Solutions and Services

SIMIT SCE – the virtual SIMATIC lab

SIMIT SCE is part of the innovative generation of IT solutions from Siemens that utilizes the enormous potential of modern computer simulation for training purposes.

With SIMIT SCE, you create your virtual SIMATIC lab on the PC. SIMIT SCE provides you with freely configurable plant models that can be connected at the click of a mouse to the following:

- The actual SIMATIC S7 controller

On one hand, this allows you to test your automation program with vivid, dynamic models, and on the other hand, it is possible to simulate any complex processes, or even entire plants on the PC. SIMIT SCE is thus the ideal supplement to the actual SIMATIC hardware installation in the lab.

An integrated training concept

Whether you're dealing with elementary training or an advanced automation course, SIMIT SCE provides integrated support for the currently strong project orientation of vocational training. Training installations in the automation environment are generally organized into the following sub-areas:

- Programmable controller (PLC), e.g. SIMATIC S7 300/400
- Plant model – e.g. conveyor belt with SIMIT SCE (see figure)
- Optionally: Human machine interface systems, e.g. ProTool/Pro, WinCC

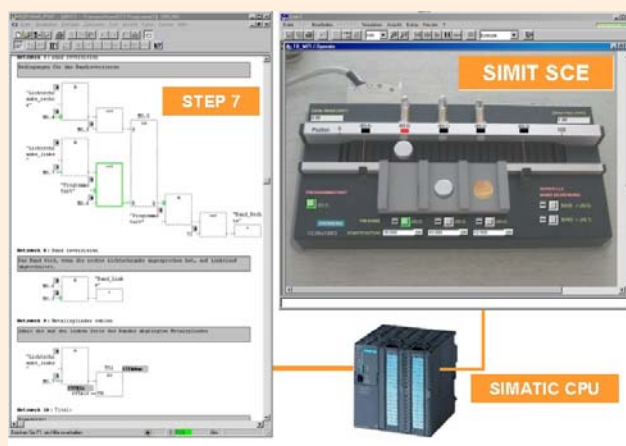
SIMIT SCE now enables the student to prepare the individual project steps autonomously on the PC:

1. Creation of the PLC program in the SIMATIC Manager with STEP 7
2. Download of the generated STEP 7 program to the actual SIMATIC S7 CPU
3. Start of the dynamic plant model on SIMIT SCE. SIMIT SCE connects automatically to the SIMATIC S7 CPU.

In conjunction with the virtual SIMIT SCE plant model, the automation system is established transparently, from the concept right up to the actual controller – working just like the professionals.

Plant modeling made easy

Just like on PC-based Windows applications, all the important functions in SIMIT SCE are just a click of the mouse away. Graphics modeling allows the teacher to design new plant models at any time



SIMIT SCE – training installation in conjunction with SIMATIC STEP 7

and make them available to the students – whether for teaching purposes, homework, or exams. To create a new example, the required components are simply selected from the comprehensive, ready-to-use libraries and dragged and dropped to form a virtual plant.

Missing elements don't present a problem either – it is possible to create new, individual library components.

SIMIT SCE automatically connects to the actual SIMATIC controller or to S7-PLCSIM via the MPI interface. Standard interfaces such as OPC or interfaces to Microsoft EXCEL are also offered. For easy startup, the scope of supply includes complete, modifiable specimen tasks that are fully coordinated with the new SIMATIC TELESTART e-education concept.

Licensing

SIMIT SCE is suitable for universities, schools and commercial training centers:

SIMIT SCE Software for Training – single license

The single license allows SIMIT SCE to be used on one PC only.

SIMIT SCE Trainer Package – classroom license

The *SIMIT SCE Trainer Package* has been especially tailored towards modern classrooms with networked PCs. The package contains 11 *SIMIT SCE Software for Training* licenses as standard, managed by a central server PC with a dongle. The local *SIMIT SCE Software for Training* installation is simply started on each client PC and a free license is fetched over the PC network. In this way 11 SIMIT applications can be started. An additional single workstation dongle enables the trainer to use SIMIT on his own computer independent of the network.

The trainer package is also obtainable with 12 single dongles (recommended for classrooms with laptops).

The **SIMIT SCE Basic Package** contains:

- A graphical user interface for modeling and visualizing virtual plants
- Ready-to-use libraries for creating new specimen models (for example, process components and standard functions – in total, more than 160 individual components and operator elements)
- Interfaces to S7-PLCSIM, MPI, OPC server, OPC client and Microsoft EXCEL
- Demanding visualization of the plant simulation through dynamic graphics
- Individual compilation and acquisition of simulation values and I/O values for documentation of the simulation results
- Online trend plotting of simulation values

If you would like detailed information on SIMIT SCE or you want to speak to us personally, please don't hesitate to contact us direct.

Further information:

Siemens AG
Industrial Solutions and Services
Siemens Simulation Center
I&S IS E&C MES
Werner-von-Siemens Str. 60
91052 Erlangen, Germany

Order numbers:

SIMIT SCE Software for Training
Single user license – 1 individual dongle
9AP1414-2AA40 €230.--*

SIMIT SCE Trainer Package (12 users)
Classroom license – 1 network dongle with 11 licenses
In addition a single dongle
9AP1414-2AA10 €1,990.--*

SIMIT SCE Trainer Package (12 users)
Classroom license – 12 individual dongles
9AP1414-2AA50 €2,430.--*

*) Prices are in Euro ex works, excluding packaging. Prices do not include sales tax (V.A.T. – value added tax). This will be calculated separately at the appropriate rate according to the legal requirements. Publication of a new price list invalidates all previous prices. Subject to change without prior notice.

The products are to be used for training purposes only. The "General Conditions of Sale" and the "General Conditions for the Supply of Products and Services of the Electrical and Electronics Industry" apply. The "General Conditions for the Use of Software Products for SIMIT Software" apply for SIMIT software products.

In addition, the " Supplementary License Agreement for the Permission to Use SIMATIC and SIMIT Software for Research, Development and Educational Institutes " must be signed. You will receive this agreement from your SIMATIC partner following receipt of your order.

System requirements

Standard PC (e.g. Pentium III/IV or comparable, 128MB main memory, 100MB free HD memory).
Operating systems: Microsoft Windows 2000, Windows XP professional und Windows NT 4.0 (SP 5 or higher).

All rights reserved.

SIMIT is a registered trademark of Siemens AG. All other product and system names are (registered) trademarks of their owners in each case and must be treated as such.

Contact: SIMIT Infoline
Telephone: +49 (0)9131 7-4 34 06
E-mail: simit@erl9.siemens.de
WWW: <http://www.siemens.de/simit>
<http://wwws.de/sce>