

1

Mounting the HMI device 安装 HMI 设备

1.1 Important information – 重要信息

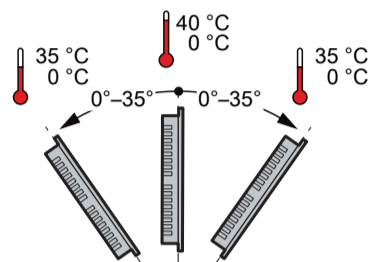
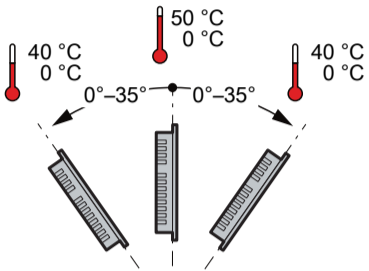
This document provides simple installation instructions. Complete installation, commissioning and safety instructions are described in the operating instructions manual.

本文档仅仅是安装说明。完整的安装、调试以及安全指南，可参考操作说明手册。

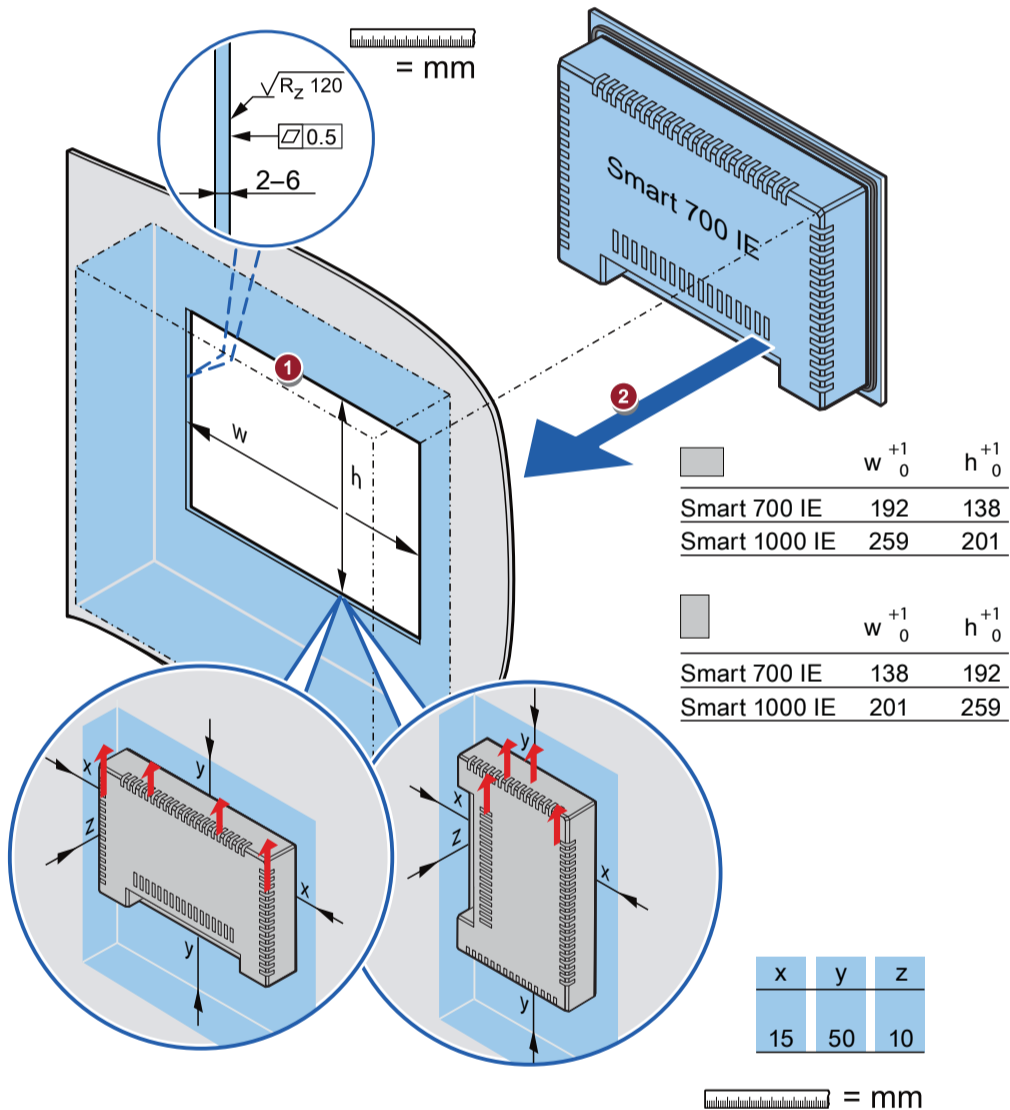


<http://www.industry.siemens.com.cn/automation/cn/zh/human-machine-interface/operatorinterfaces/>

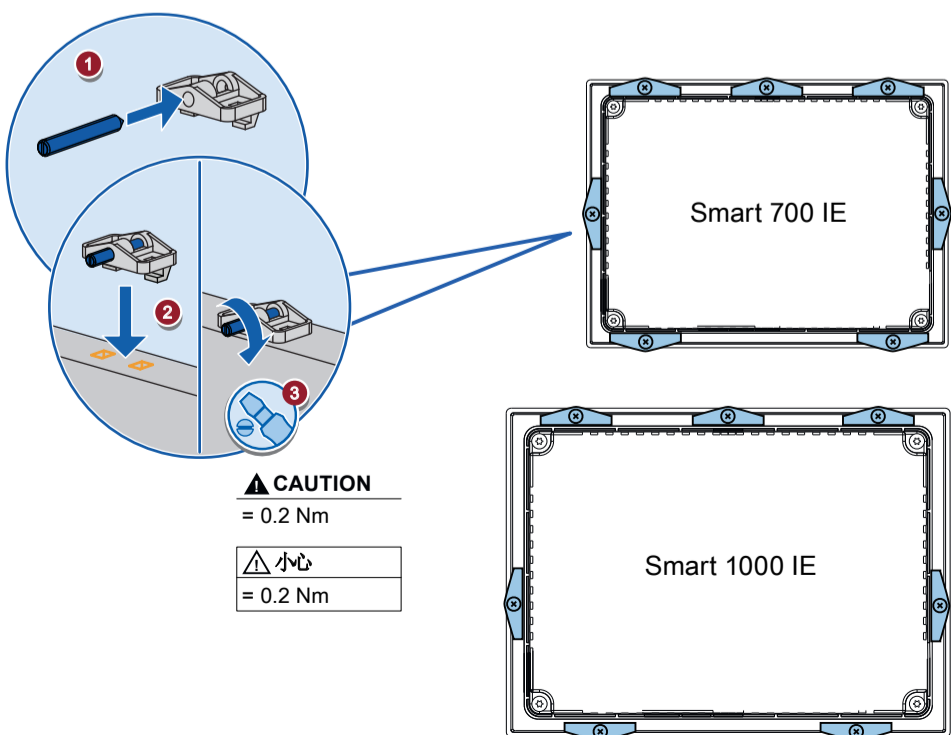
1.2 Valid Mounting positions – 有效的安装位置



1.3 Installing the HMI device – 安装 HMI 设备



1.4 Mounting the HMI device – 安装 HMI 设备



2

Connecting the HMI device 连接 HMI 设备

2.1 Important information – 重要信息

CAUTION

Ensure that you install sufficient strain relief for all connection cables on the outside of the HMI device.

小心

请确保在 HMI 设备外部为所有连接电缆安装足够的张力消除装置。

2.2 Equipotential bonding – 等电位联结

CAUTION

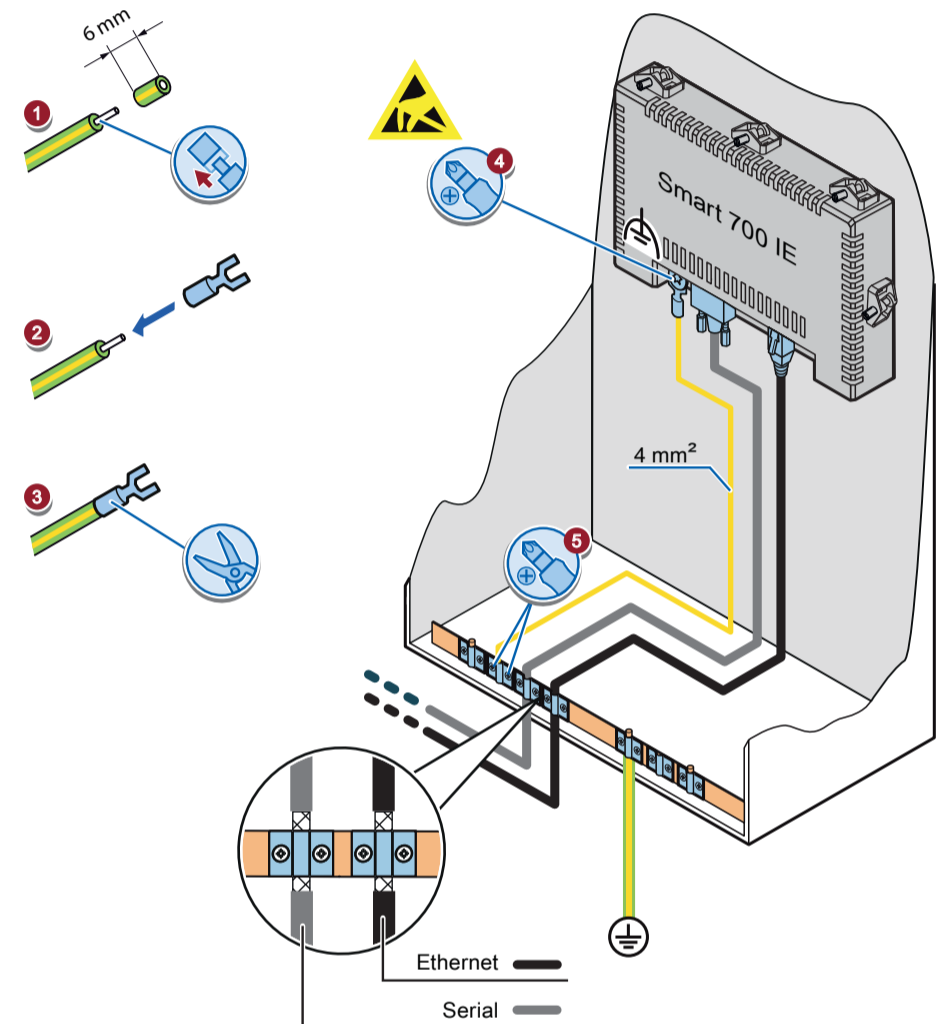
ESD – Electrostatic Sensitive Device

When mounting the HMI device, make sure that the person, the workplace and the packaging are properly grounded.

小心

ESD - 静电敏感设备

安装 HMI 设备时，请确保人员、工作台和整体设备正确接地。



CAUTION

Route equipotential bonding conductors and data cables in parallel with minimum clearance. Do not use conductor shields for equipotential bonding.

小心

以最小间距，平行敷设等电位联结导线和数据电缆。请勿对等电位联结应用导线屏蔽。

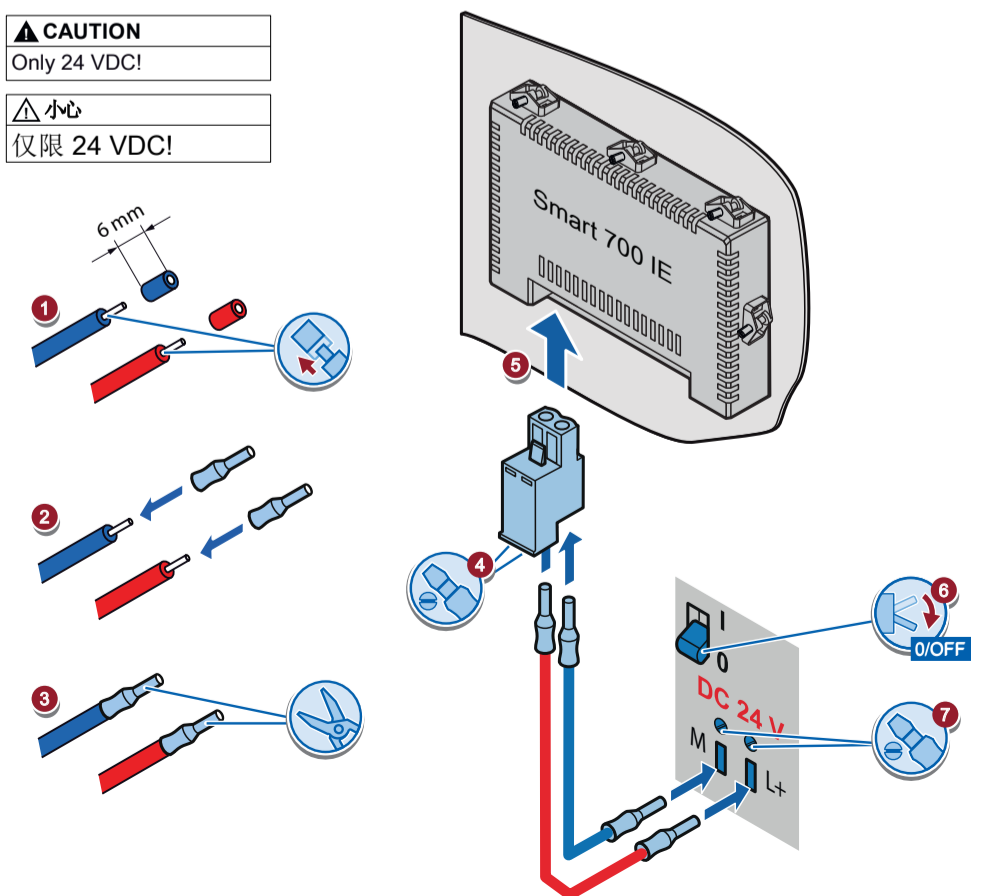
2.3 Connecting the power supply – 连接电源

CAUTION

Only 24 VDC!

小心

仅限 24 VDC!



3

Transferring a project 传送项目

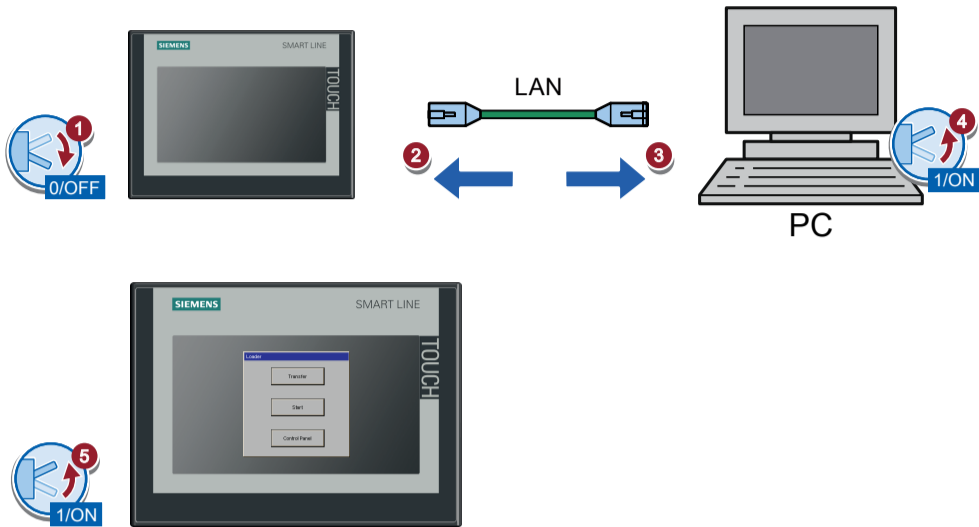
3.1 Connecting a configuring PC – 连接组态 PC

CAUTION

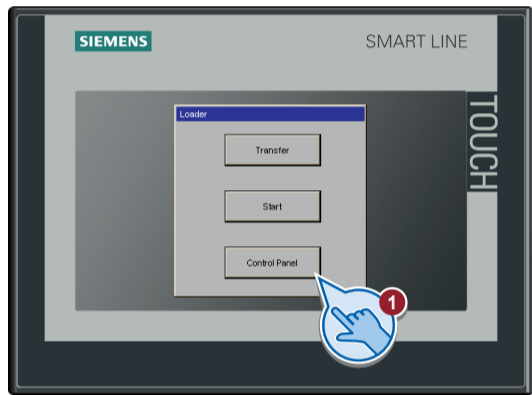
Transferring a project will overwrite the current project on your HMI device. If required, save existing data before the transfer.

小心

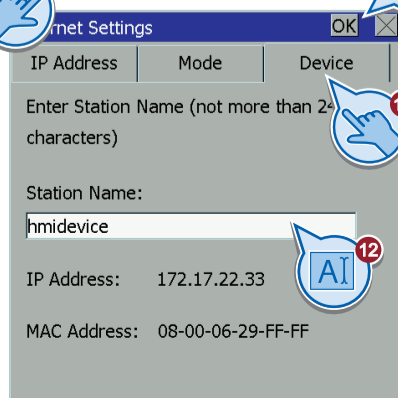
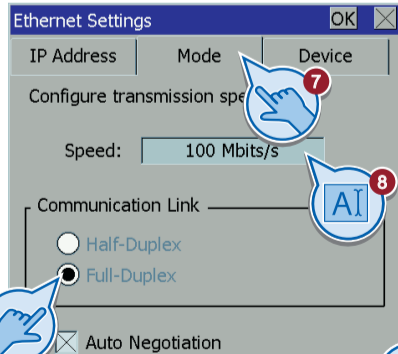
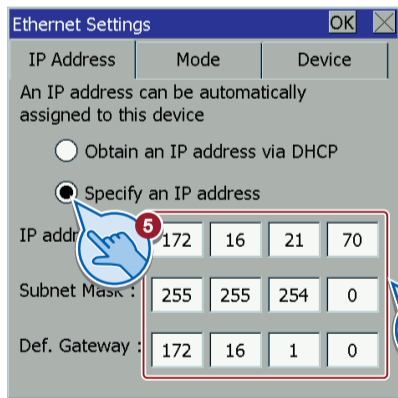
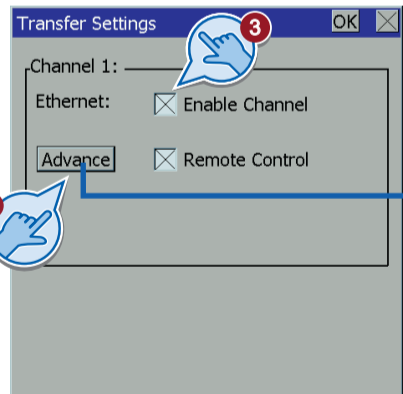
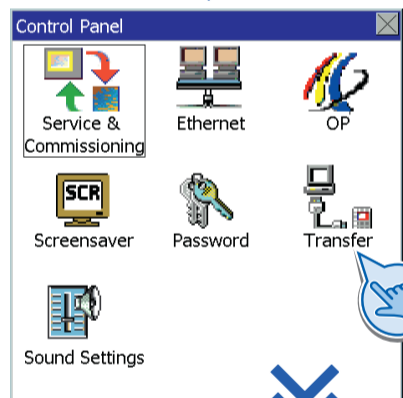
传送项目时，HMI 设备中的当前项目将被覆盖。根据需要，在传送前保存现有数据。



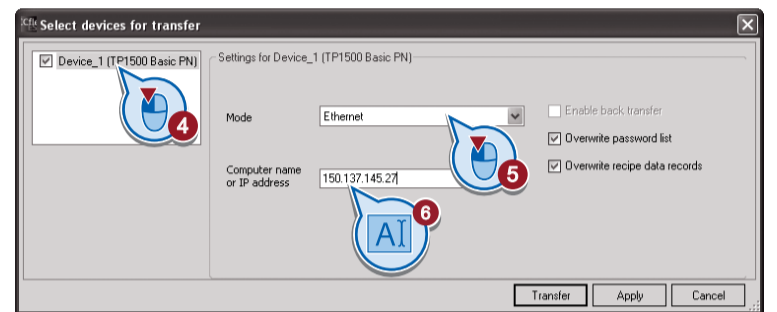
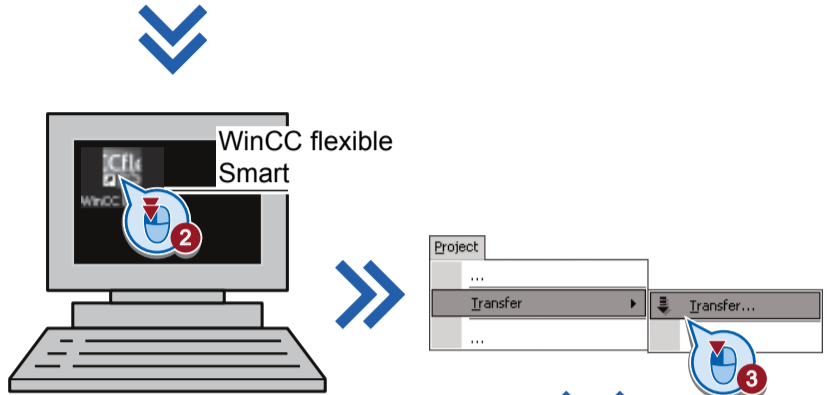
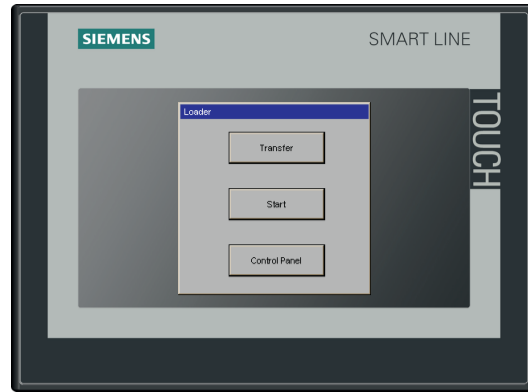
3.2 Configuring the data channel – 组态数据通道



<http://www.industry.siemens.com.cn/automation/cn/zh/human-machine-interface/operatorinterfaces/>



3.3 Starting transfer – 启动传送



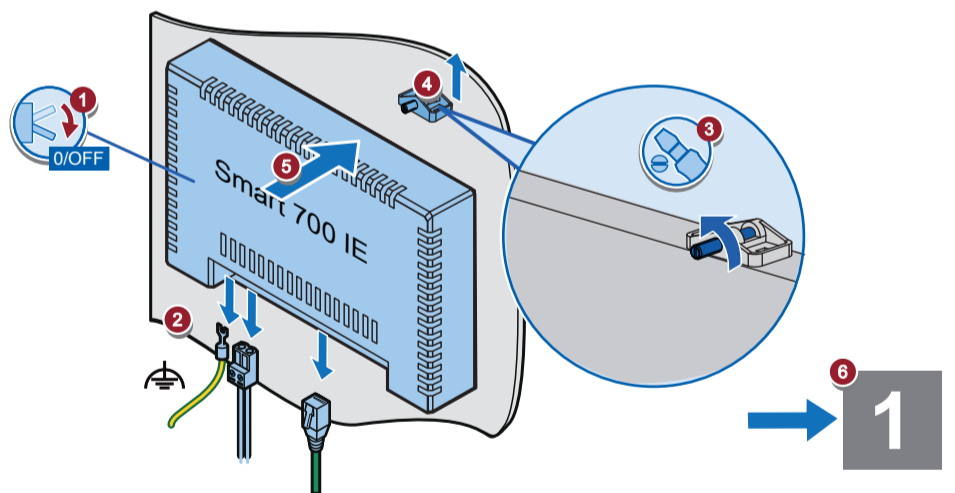
4 Replacing the HMI device 更换 HMI 设备

CAUTION

If required, save existing data before replacing the HMI device.

小心

根据需要，在更换 HMI 设备前保存现有数据。



SIEMENS

SIMATIC HMI
Smart 700 IE V3
Smart 1000 IE V3

Technical Support
技术支持

<https://support.industry.siemens.com/cs/cn/zh/ps>

Service and spare parts
维修和备件

<http://www.automation.siemens.com/partner>

Mounting the HMI device
安装 HMI 设备

1

Connecting the HMI device
连接 HMI 设备

2

Transferring a project
传送项目

3

Replacing the HMI device
更换 HMI 设备

4

08/2015
A5E35936666-AA

